

SETTINGS FOR WINDOWS 7 & above

- 1) Click on the **Start Button** and Select **Control panel** will display the following Screen

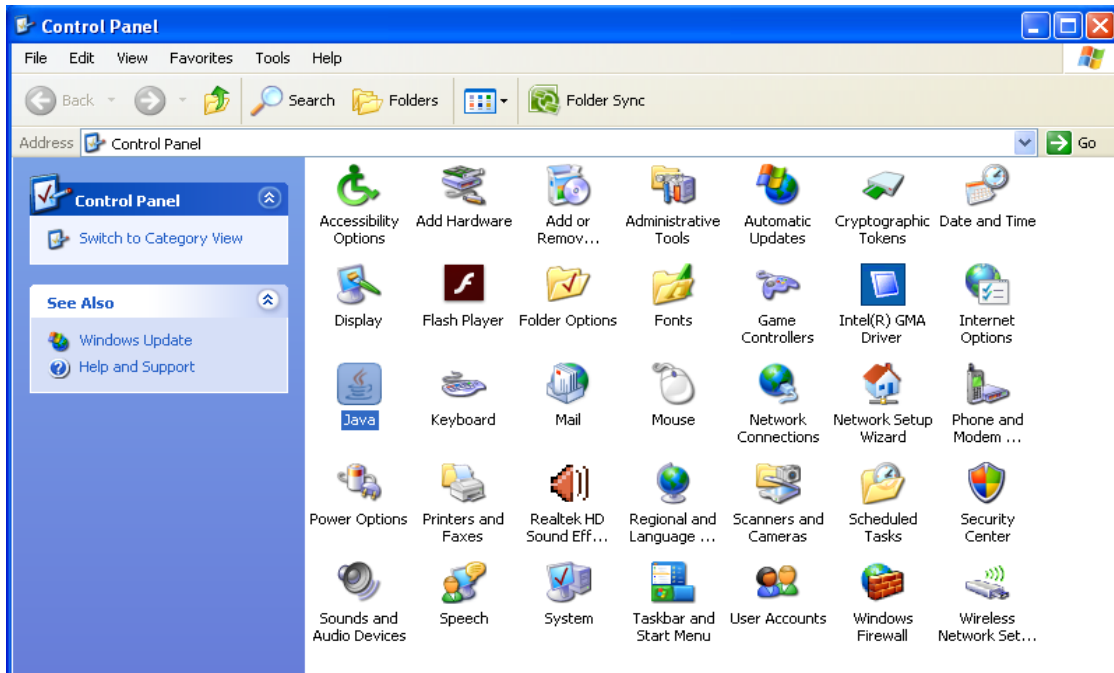


Fig-1

- 2) Click on **Java Icon** as shown above will display the following screen

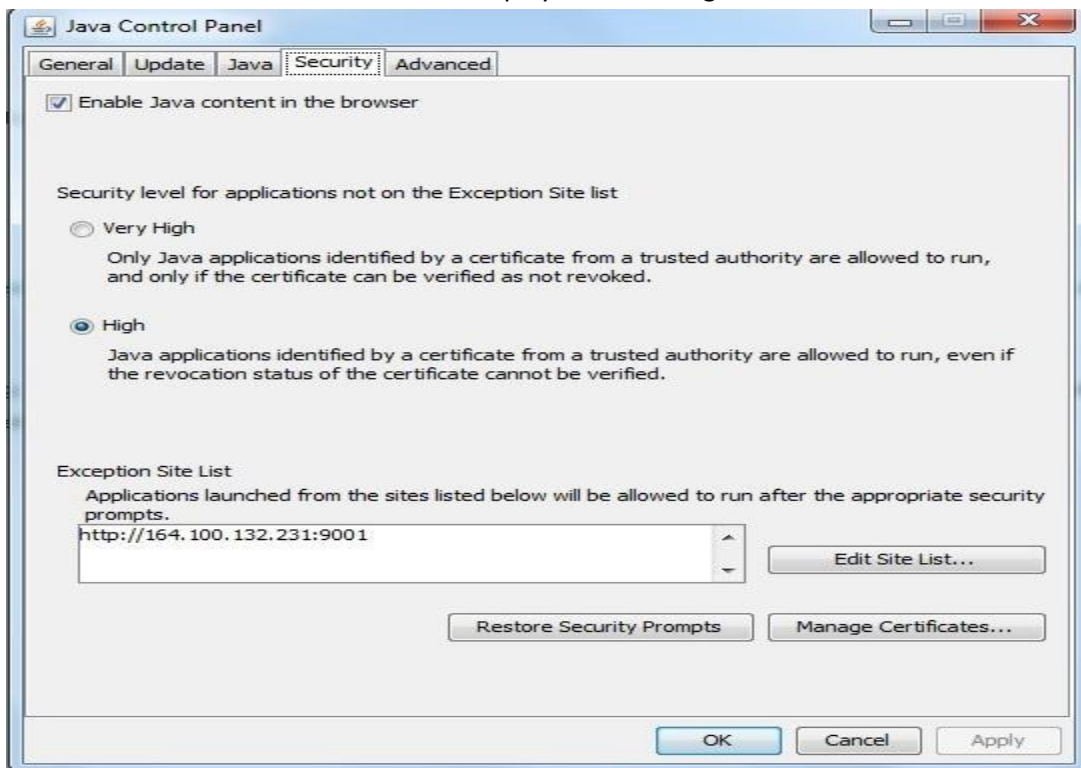
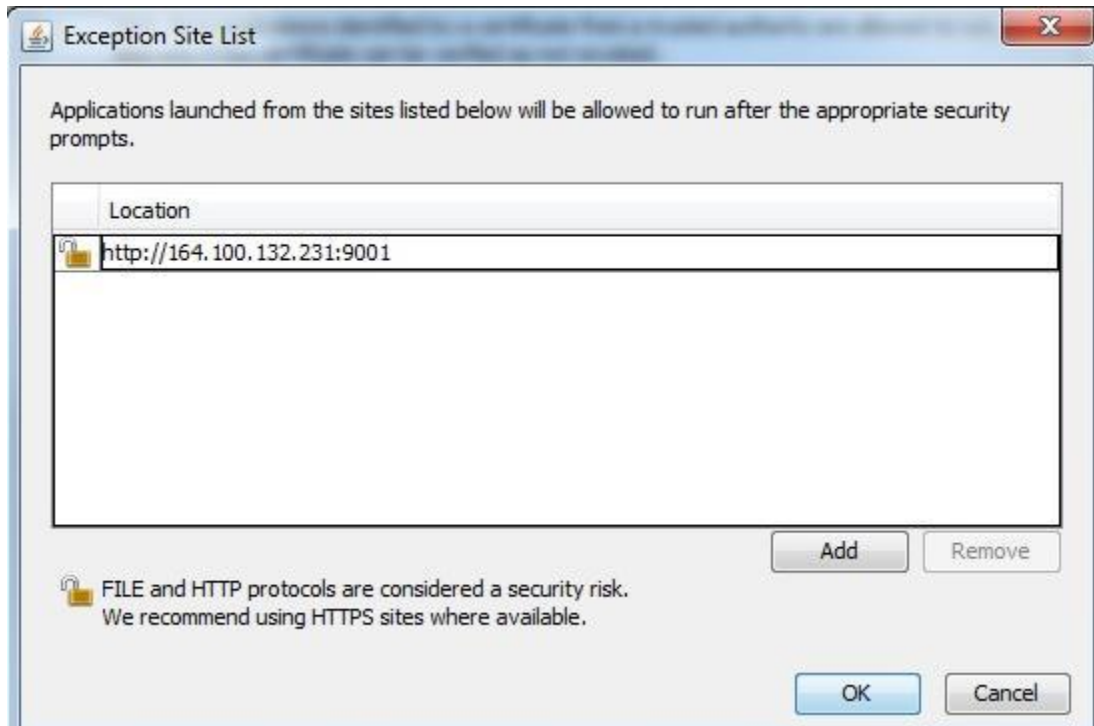


Fig-2

- 3) Select **Security** Option as shown above and Select, '**Edit Site List**' will display following screen



Enter in the Location as **http://125.21.84.173:9001/** and press on OK and then press on the Ok button of previous screen

- 4) Click on the **Public Data Entry** Button for data entry screen